

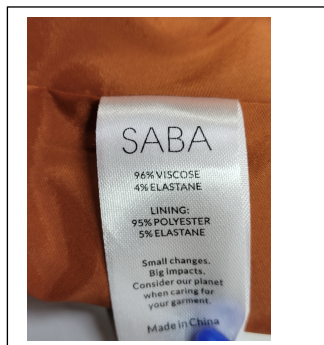
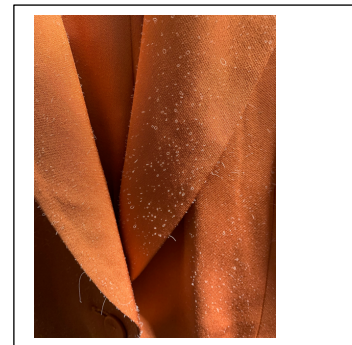
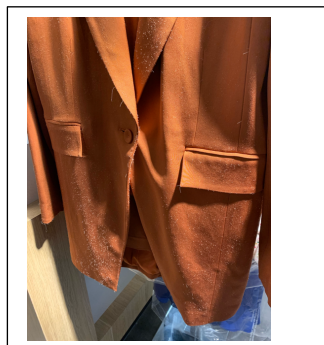


The DIA has been alerted by four drycleaners to problems with cleaning a two piece brown Saba suit.

The garment alert will be uploaded to the DIA website under *Resources/Technical Information/Garment Alerts*

<b>Brand:</b>	Saba	<b>Style name/number:</b>	Isadora Blazer WW22300 Isadora Wide Leg Pant Style: WS22622
<b>Care Label:</b>	Dry Clean Only P Warm Iron Under Cloth	<b>Fabric Content:</b>	96% viscose 4% elastane  Lining: 95% polyester 5% elastane

**Images of garment:**



**Issue:**

We have received four reports from DIA members about the Isadora two piece Saba suit. Saba have previously told a drycleaner in New South Wales that they have had no issues with this suit but it is interesting to note that three other drycleaners around Australia.

The DIA has written to Saba to raise this issue.

This problem has been around for many years and can show in two ways - firstly the spandex yarns have stretched out or broken and protrude from the surface of the fabric or secondly the stretch spandex yarns have lose their colour and appear gold or tan. In both cases the end result is that the garment now appears fuzzy or looks like it has lint or takes on the appearance of tiny bits of spaghetti poking out.

In either situation the dry cleaner is not at fault and both conditions are caused by an incompatibility of the chosen elastane used in the garment to the dry cleaning solvent. There are many elastane's that dry clean well with no problems, obviously this is not one of them.

The suit is care labelled correctly according to Australian standard AS/NZL 19957-1998. The label states dry clean in P - this is designated perchlorethelene solvent, the strongest solvent but it also means it can be cleaned in any of the solvents available in Australia.

In this instance we provided both members with a TABs bulletin supporting the above analysis and it was recommended that a DLI report also be done (at the cost of around \$33 AUD) to help support the drycleaners case that they are not at fault.

The relevant TABs was:

Tab 310 Fuzzy spandex